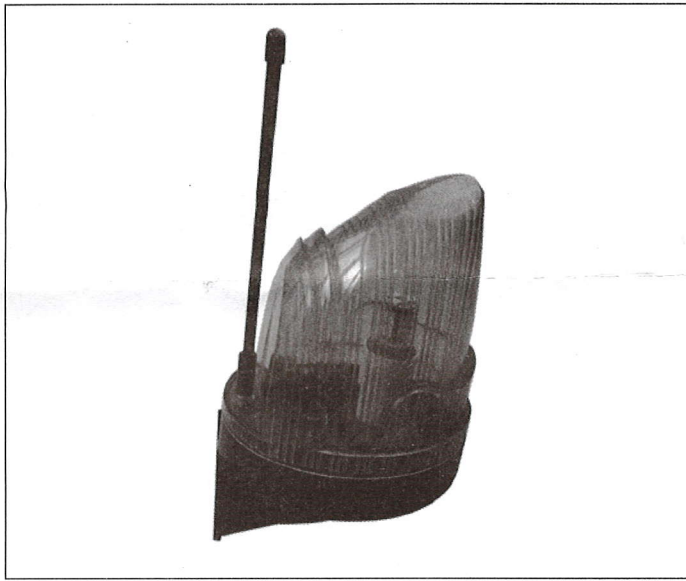


User Manual

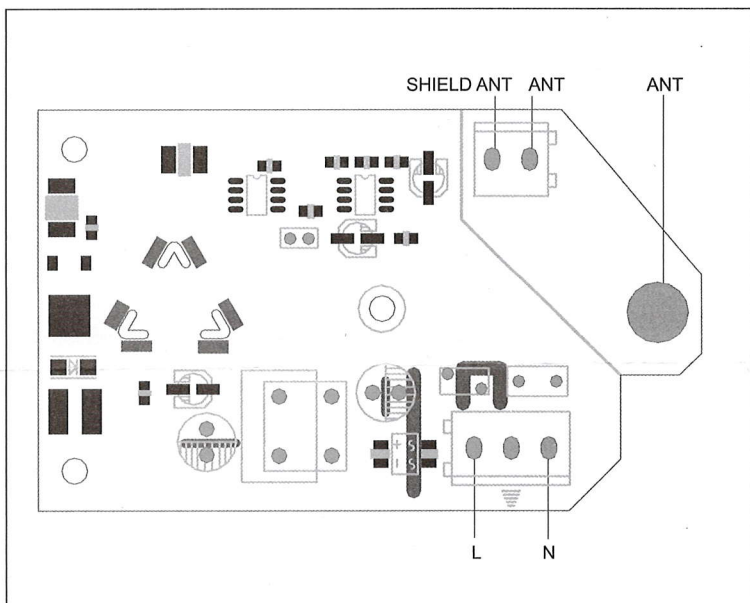


1 Security Guide

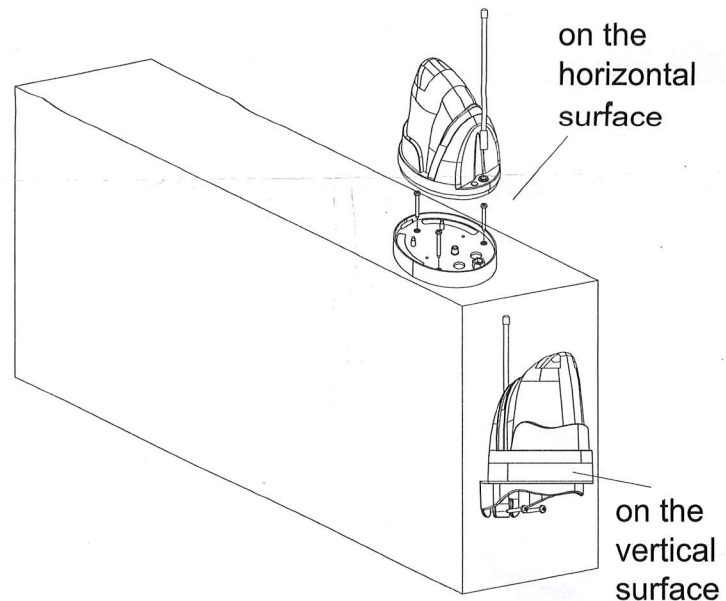


Thank you so much for your purchasing.
Please refer to the following before using.

2 The Over-all structure



3 Installation ways



4 The main technical parameters

Power supply: AC/DC24-265V

Working current: 60mA

Flash frequency: 1S

Rated power: 2W

Working enviromental temperature: $-35^{\circ}\text{C} \sim 90^{\circ}\text{C}$

Working enviromental humidity: $10\% \sim 90\%\text{RH}$

Sizes: 130mm (L)×100mm (W)×220mm (H)

Total weight(Includes accessories) :around 250g.